



PESARESI GIUSEPPE
INFRASTRUTTURE



The foundation of the **Pesaresi Giuseppe S.p.a.** is the culmination of a long tradition of work in the construction field, undertaken by Giuseppe and Primo, two brothers who at the forefront of the times have applied new operating methods in this sector.

Strong intuition, resourcefulness and constant renewal are the elements that will lead to a rapid evolution, so much so that the *Pesaresi brothers*, in **1961**, decided to found a first operational headquarters in San Giuliano Mare in the Province of Rimini.

At first the company mainly carries out earthmoving and inert material transport activities, but soon important job orders, such as the construction of the Florence-Certosa and Faenza-Forlì motorway section on behalf of Società Autostrade, expand and re-define the operating field launching it towards new goals. And this is why in 1968 the Company was registered in the National Builders Register becoming a **ROAD CONSTRUCTION COMPANY** and acquiring, in this new role, prestigious assignments such as the construction of the Square of Savignano sul Rubicone and numerous road and motorway lots in Romagna and in Marche.

These experiences are the precondition for the continuous and constant evolution

which manifests itself not only with the acquisition of new orders, but with considerable investments in terms of structures and technologies. The offices of San Giuliano were replaced in 1972 by what can be called the first historical headquarters of the Company, in Via Emilia in Rimini.

In 1974 a technologically advanced plant was purchased for the production of bituminous conglomerate, a Marini M / 150 ton / h.

The plant is immediately flanked by a first research laboratory, to guarantee a high-quality product, capable of offering performance at the highest level. The birth of the laboratory was considered at the time, an innovative move since in the construction sector, research has not yet been attributed the value of which the company already understands the importance.

Since then, in fact, Pesaresi Giuseppe Spa was aware that to be competitive it was necessary to offer a product whose quality is expressed starting from the construction materials.

Nowadays Pesaresi Giuseppe Spa Infrastrutture presents an organisation at the top of which is the second generation of the family, which works in collaboration with some of the founding members still operating.

The company structure is led by a Board of Directors and various



executives who manage the sectors: commercial, marketing and communication. The choice, to entrust the "key" positions of the company to the family members, derives from the proven management synergy that has been created between the two generations of Pesaresi. In fact, the "young" nucleus has gradually joined the solid experience and precious intuition of the first generation, which has contributed to enhancing the work done with creative ideas, targeted marketing strategies and specific technological and IT knowledge. A generational bridge between the past and future that connotes the Company in the right balance of tradition and modernity. Pesaresi Giuseppe Spa Infrastrutture qualifies today as one of the most interesting working realities in the industrial fabric of the province of Rimini, its constant growth allows to enhance the human resources of the territory contributing to its economic development.

Also, at an interregional level, Pesaresi Giuseppe Spa Infrastrutture is, both in terms of turnover and modernity of technologies, one of the most successful companies in its sector.

The reasons for this success can be identified in some factors of great importance: the enhancement of human beings, the constant technological evolution, the intuition of the evolution of the market.

Pesaresi Giuseppe Spa Infrastructures company mainly deals with:

- **Road works • Airports • Racetracks • Coloured asphalts**
- **Construction works • Hydraulic works**
- **Sewers • Aqueducts • Bituminous conglomerates plant**
- **Concretes plant • Aggregates crushing plant**
- **Research and Development Department**
- **Certifications:**

Management Systems : **UNI EN ISO 9001:2015 • UNI EN ISO 14001:2015 BS OHSAS 18001:2007 • UNI ISO 39001:2016 • Legislative Decree 231/2001**

Product Certificates: **EN 12620:200 • EN 13043:2004 • EN 13242:200 • EN 13108-1:2008 • EN 13108-5:2008 • EN 13108-7:2008 D.M. 14/01/2008**





RESEARCH AND DEVELOPMENT DEPARTMENT





RESEARCH AND DEVELOPMENT DEPARTMENT

Pesaresi Giuseppe S.p.a. in order to be constantly up-to-date with the new needs, related to the use of its products, at the beginning of the 70's opened within its structure, a Research and Development Department, which has contributed to progressively updating all its production, simultaneously with the development of new materials.

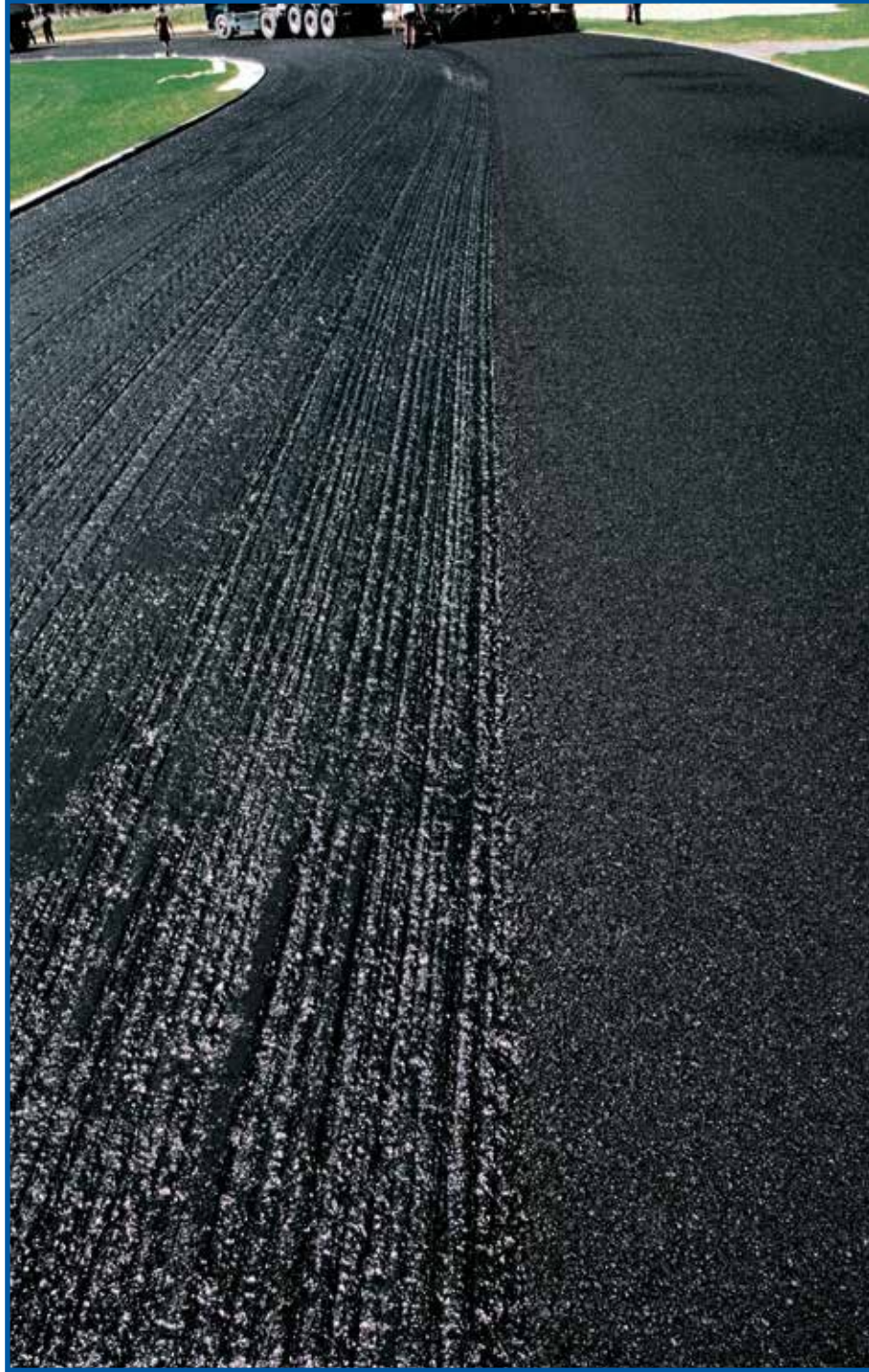


BITUMINOUS CONGLOMERATE PLANT

BITUMINOUS CONGLOMERATE PLANT

The bituminous conglomerate plant gives Pesaresi Giuseppe S.p.a. the chance to perfectly manage the product in its peculiarities and conforms with every application need.





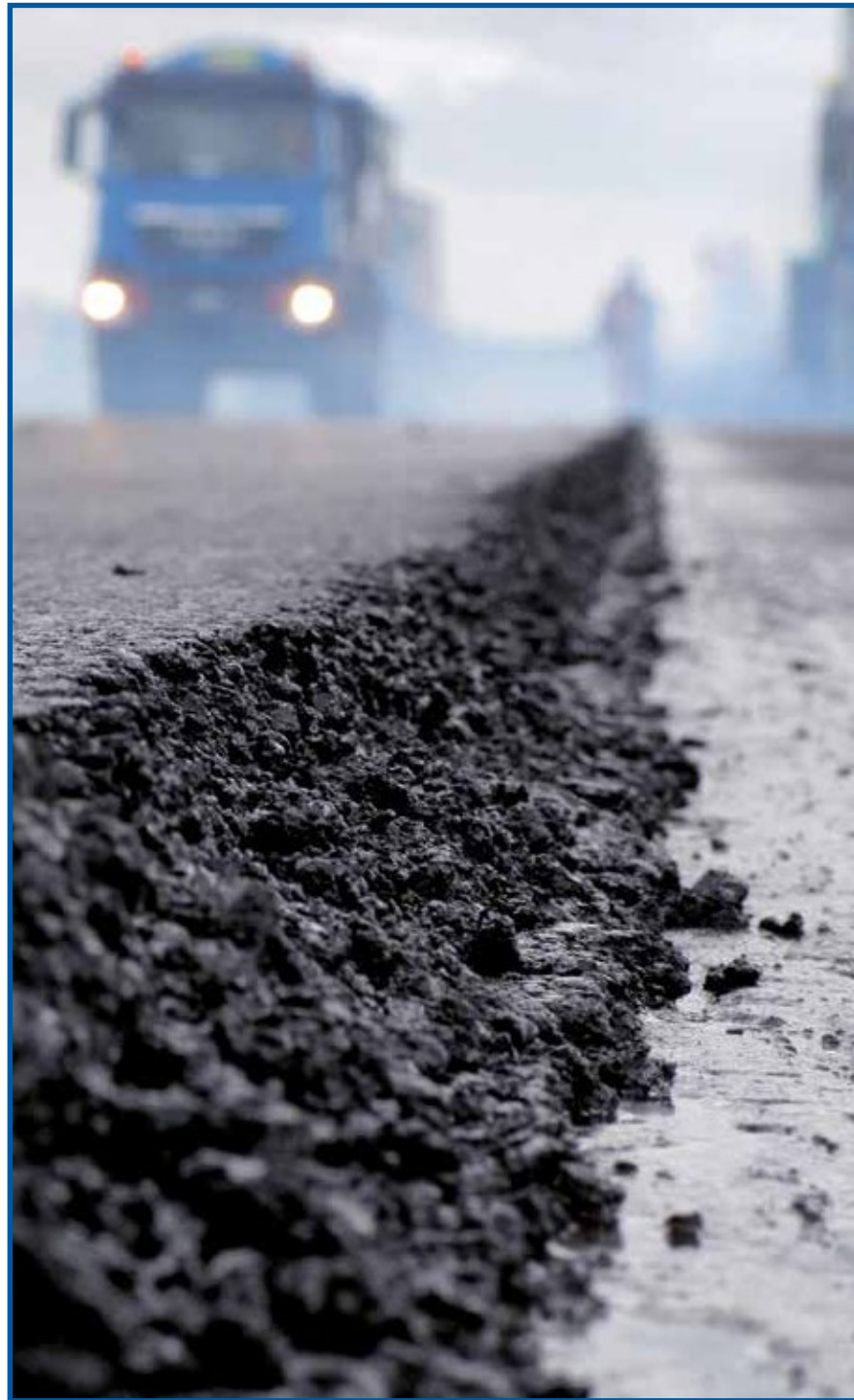
• ENZO AND DINO FERRARI RACETRACK- IMOLA



• ENZO AND DINO FERRARI RACETRACK- IMOLA



• ENZO AND DINO FERRARI RACETRACK- IMOLA



• *FEDERICO FELLINI AIRPORT*



• FEDERICO FELLINI AIRPORT

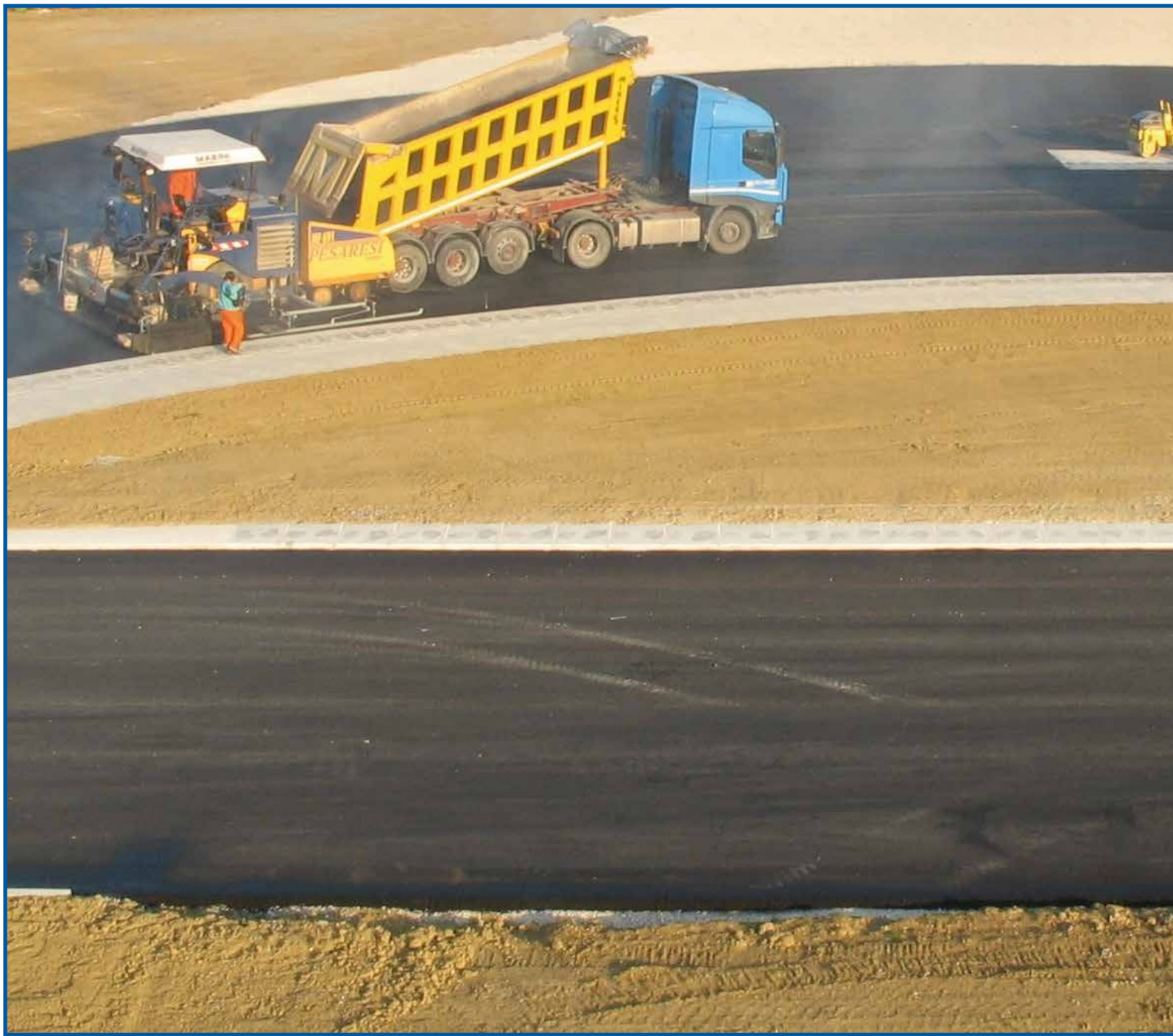


- ENZO AND DINO FERRARI RACETRACK- IMOLA
- FEDERICO FELLINI AIRPORT
- MISANO WORLD CIRCUIT MARCO SIMONCELLI

There are special asphalts, for specific situations. Pesaresi Giuseppe Spa has set up asphalts with conglomerates of the highest quality value and perfect performance for these and other special locations. Together with the use of adequate technologies for their installation.



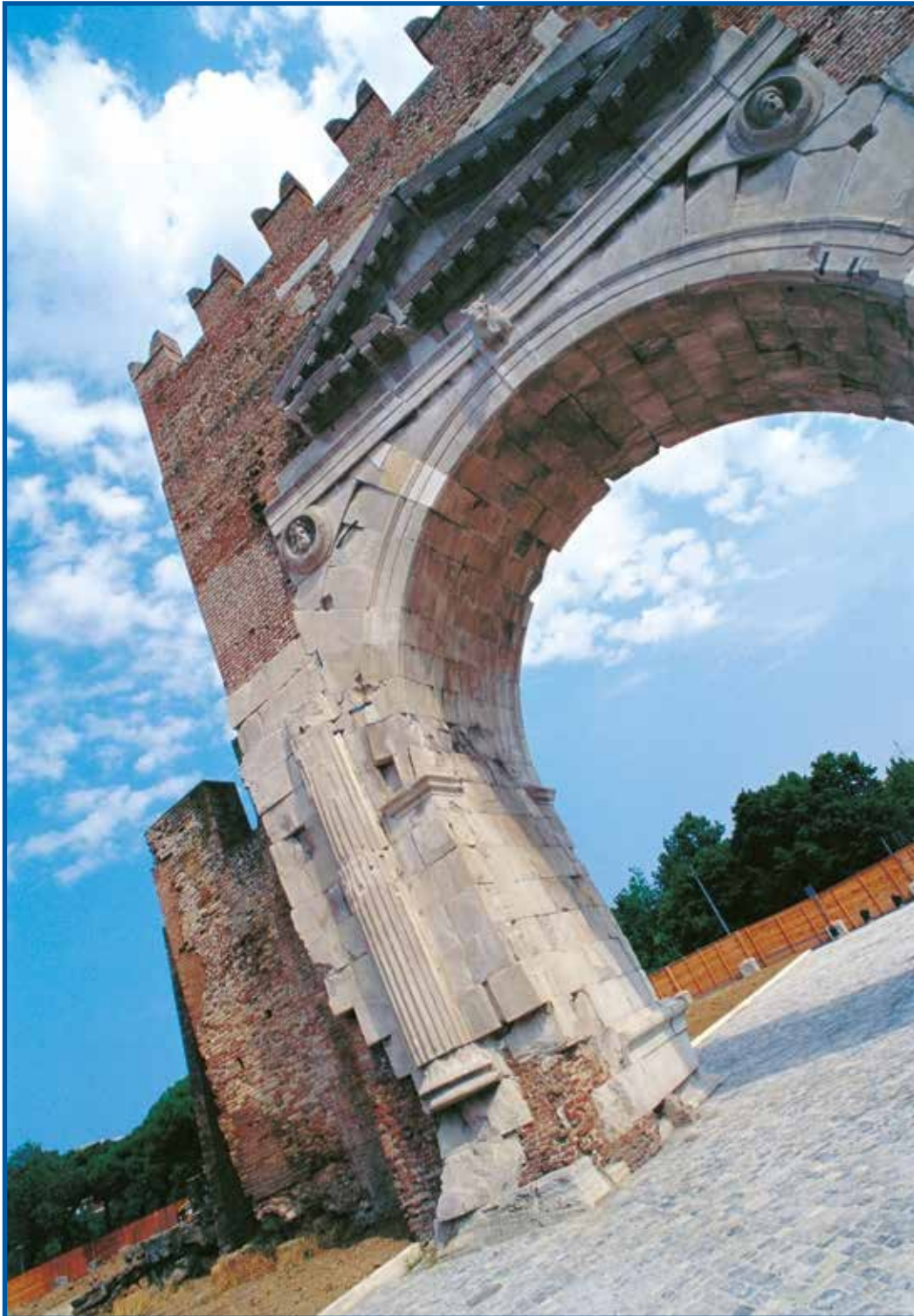
- MISANO WORLD CIRCUIT MARCO SIMONCELLI



• MISANO WORLD CIRCUIT MARCO SIMONCELLI



ARCH OF CAESAR AUGUSTUS



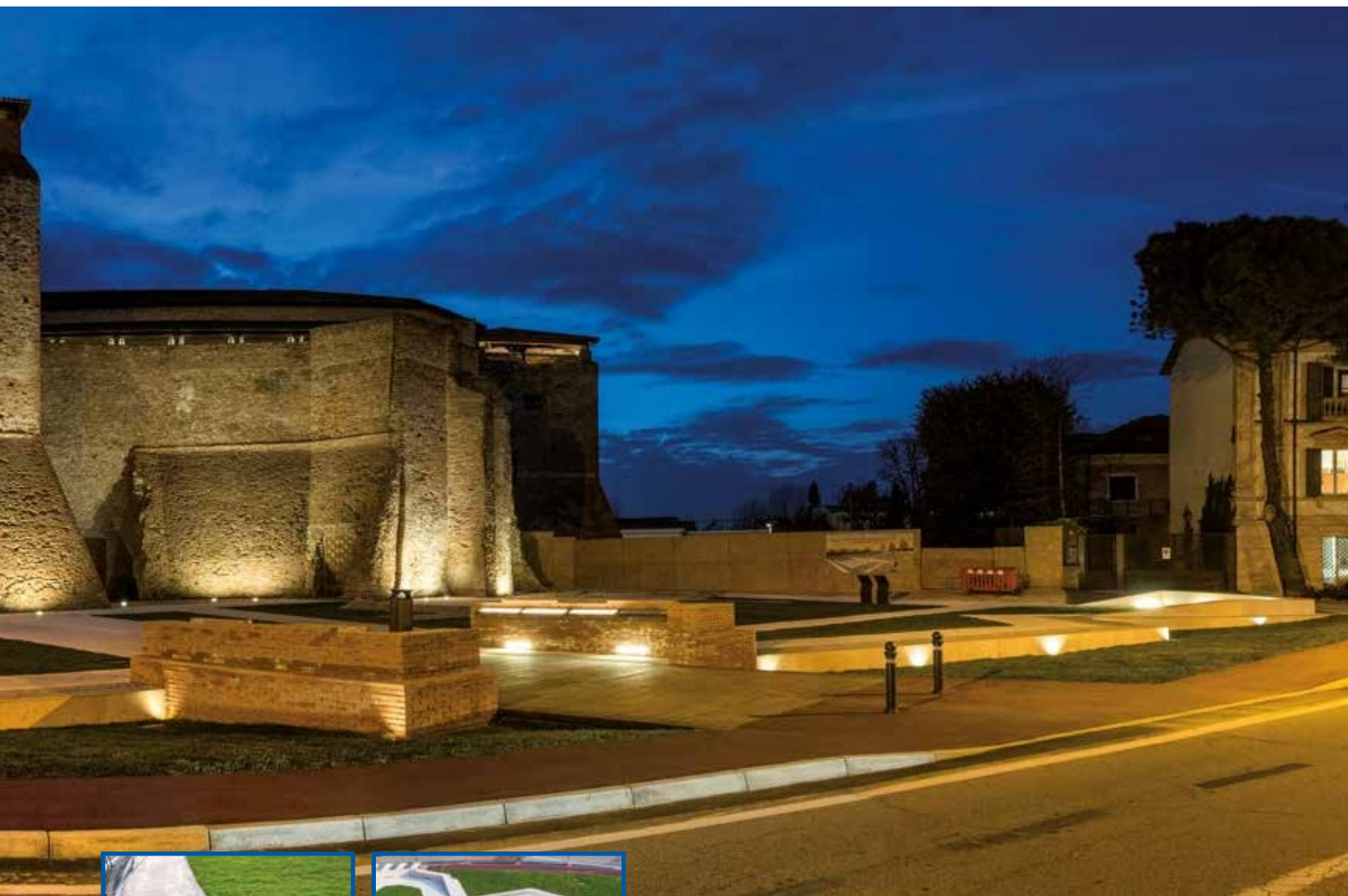
ARCH OF CAESAR AUGUSTUS

The complete redevelopment, in collaboration with the intention of the Ministry of Cultural Heritage, Activities and Tourism, of the Giulio Cesare area, where the Triumphal Arch of Senator Augustus (27 BC) stands.

One of the best-preserved arches in Europe, considered virtually intact, the gateway to the city of Rimini (ancient Ariminum), connected the two main streets. The end of the Via Flaminia and the beginning of the Via Emilia decumanus, which still crosses the city with the name of Corso D'Augusto.



SISMONDO CASTLE



SISMONDO CASTLE

It takes its name from its creator and builder, Sigismondo Pandolfo Malatesta, at that time lord of Rimini and Fano Today's structure represents the central core of the castle, originally defended by a further turn of walls and a moat. It was built starting from 1437, in a period of great prosperity for the Malatesta lordship It was conceived as a fortress and palace at the same time, of grandiose proportions. Over the years, the structure has undergone various modifications and purposes. More recently it has undergone a general restoration which has allowed it to be enjoyed by the public. Lately it has been the subject of the complete redevelopment of the whole district area.



AUTOSTRADE PER L'ITALIA S.P.A. A/14 Bologna - Bari - Taranto



AUTOSTRADE PER L'ITALIA S.P.A.

Motorway A / 14 Bologna - Bari - Taranto: expansion of the third lane of the Cattolica - Fano section. Extension of the third lane of the Rimini Nord - Cattolica section. Extension of the third lane and restructuring of the Monte Marciano toll booth.



AUTOSTRADe PER L'ITALIA S.P.A. A/14 Extension of Monte Marciano toll booth



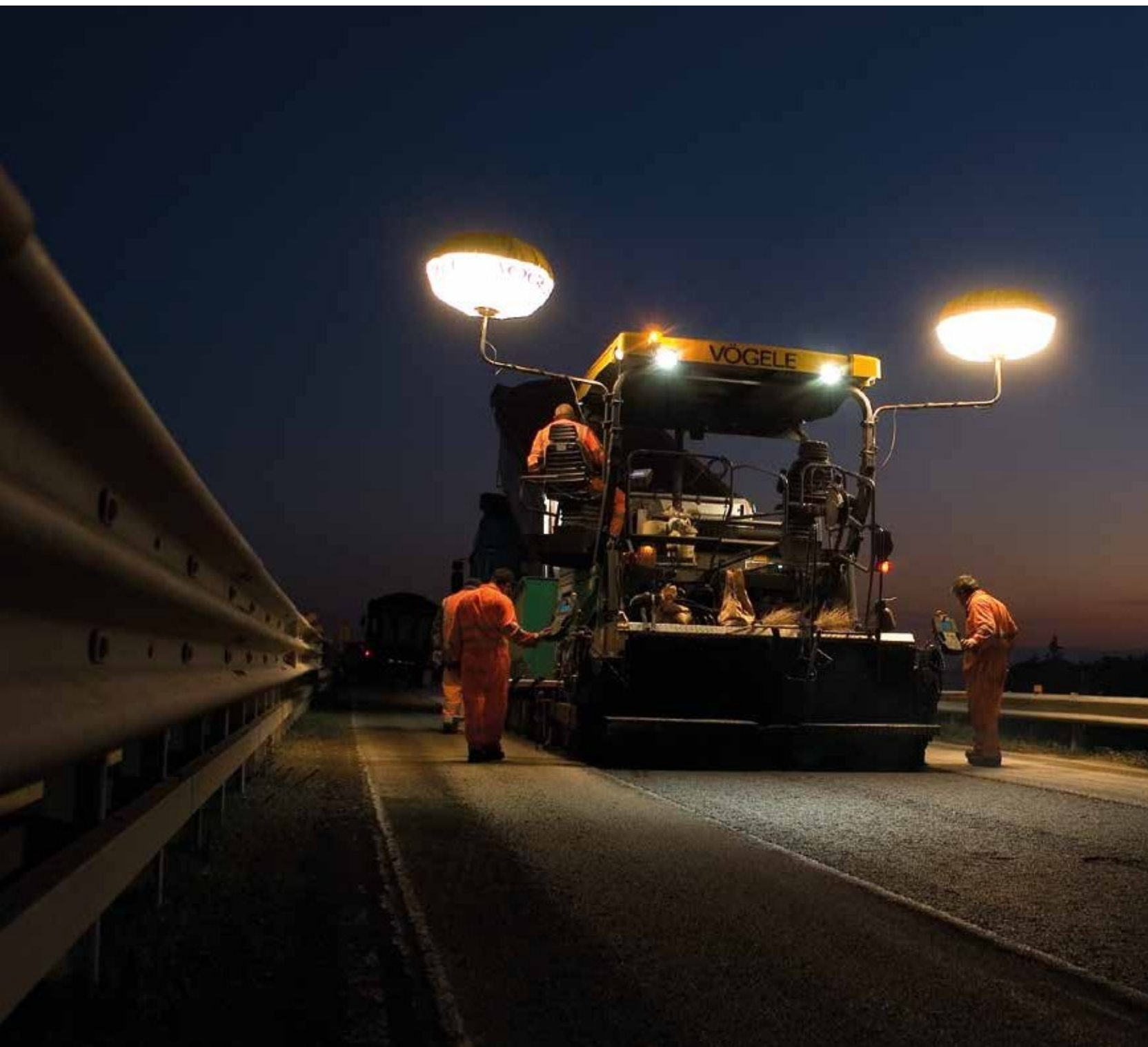
AUTOSTRADA PER L'ITALIA S.P.A. A/14 Extension of Monte Marciano toll booth



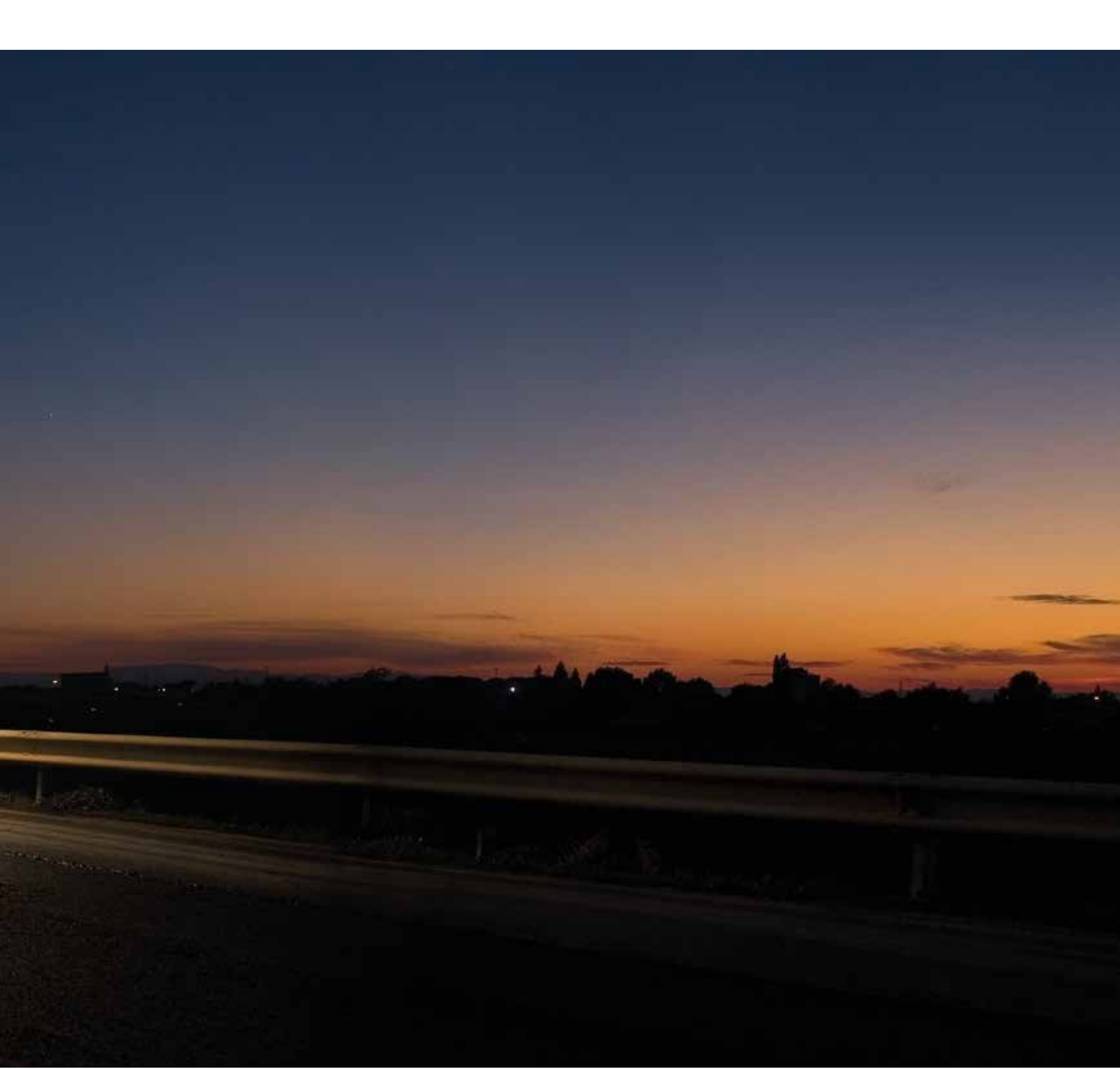
AUTOSTRADe PER L'ITALIA S.P.A. A/14 • Cattolica - Fano for Pentapolis



AUTOSTRADA PER L'ITALIA S.P.A. A/14 • Cattolica - Fano for Pentapoli



AUTOSTRADA PER L'ITALIA S.P.A. A/14 • Cattolica - Fano for Pentapolis

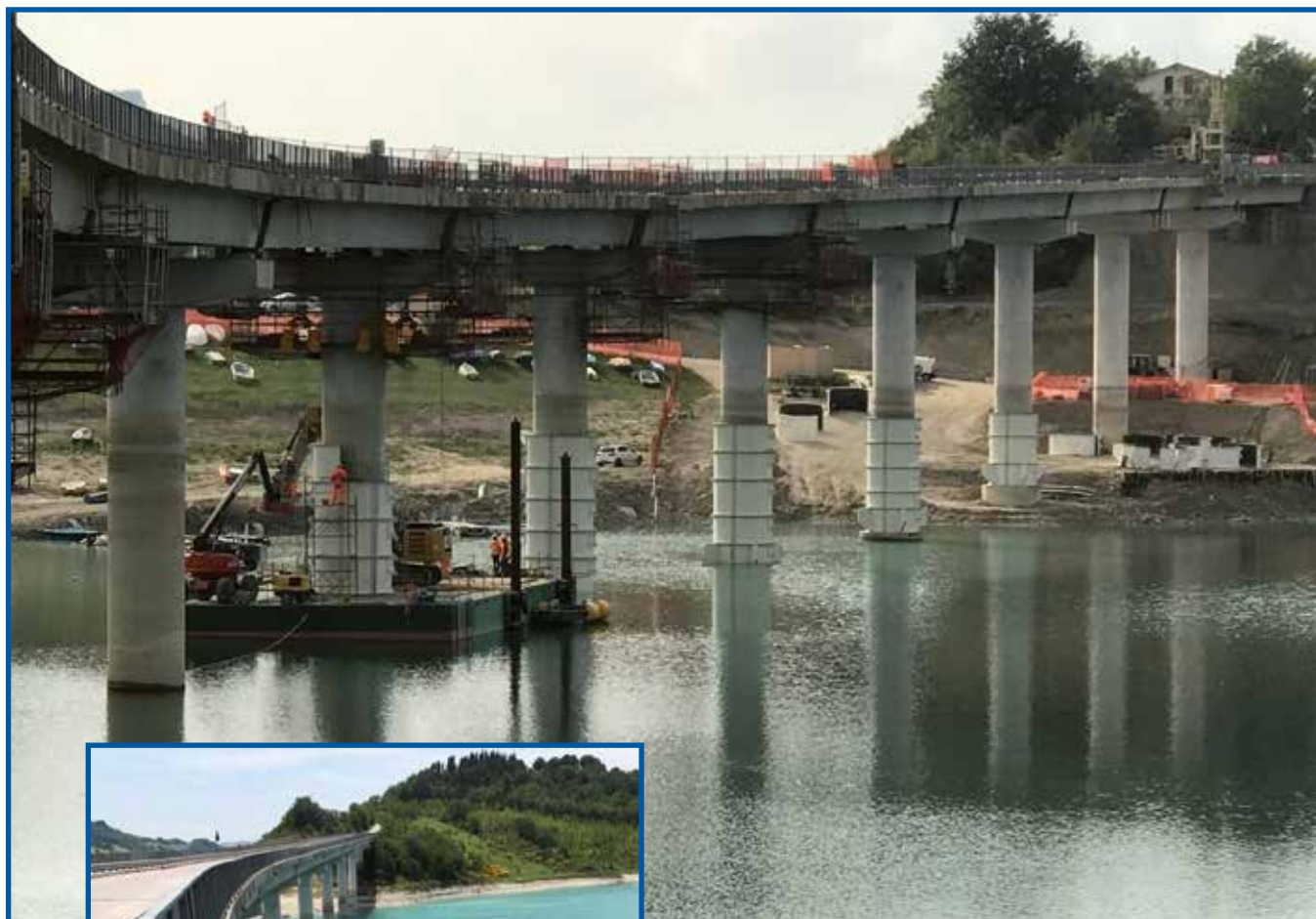




AUTOSTRADE PER L'ITALIA S.P.A. A/14 • Cattolica - Fano for Pentapoli



AUTOSTRADE PER L'ITALIA S.P.A. A/14 • Cattolica - Fano for Pentapoli



PONTE MOSCOSI, Municipality of Cingoli



PONTE MOSCOSI, Municipality of Cingoli



BRIDGE OVER THE CONCA RIVER



BRIDGE OVER THE CONCA RIVER



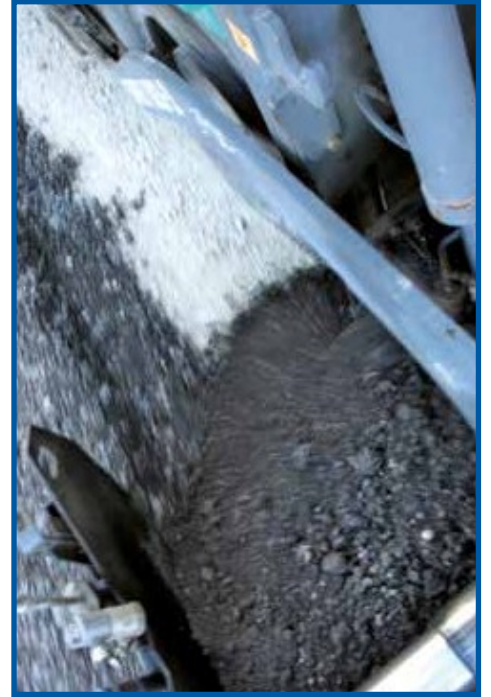
CONCRETES PLANT

The production of concrete is an important sector within the company. Pesaresi Giuseppe S.p.A. is in addition to using the production for its works, provides a high-quality product also for third parties. Large and small companies in the area.

CONCRETES PLANT



CONCRETES PLANT



SS. E145 • Concrete stabilisation.

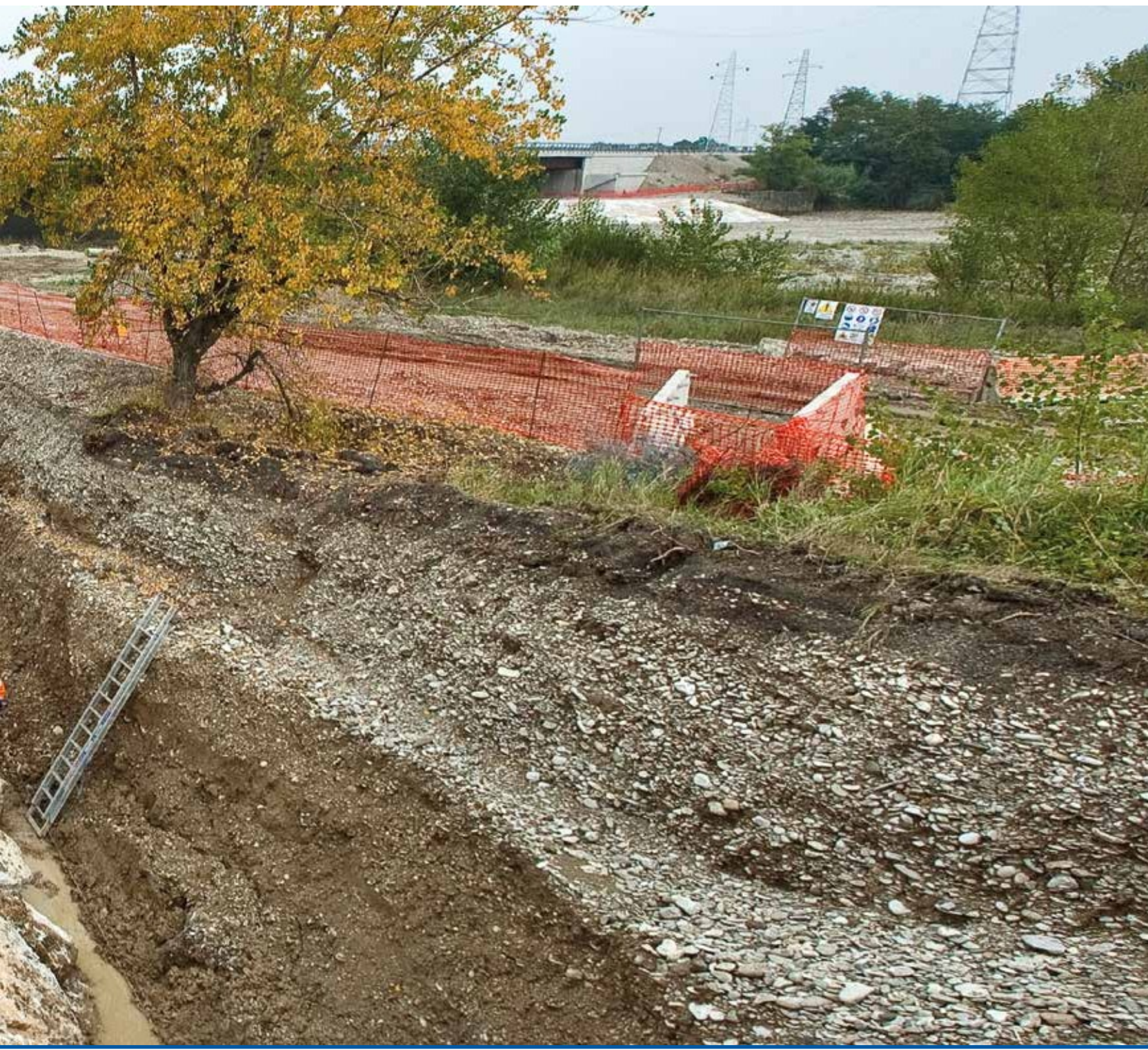


BANKS

Placement and restructuring of river and sea banks are a passive defense of the territory designed to prevent overflowing of waterways and defense of the sea banks and ports.

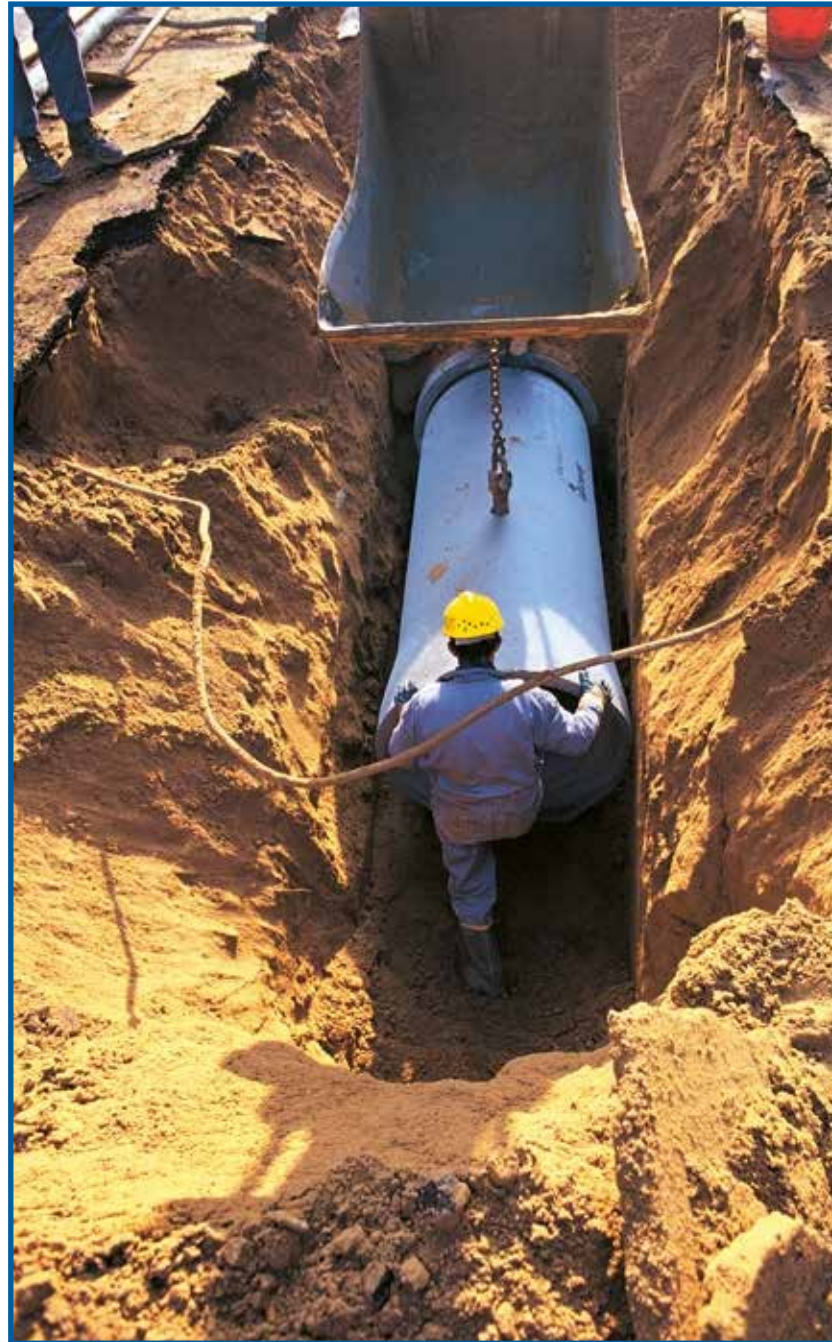


BANKS





BANKS



SEWER



SIDEWALKS



VEHICLE FLEET

The fleet of Pesaresi Giuseppe Spa is always renewed and constantly at the forefront to make our work more efficient and to guarantee the highest quality in execution. The fleet includes the Wirtgen W 210 Cold Milling Machine and the Vögele Vibro Finisher. Machines that combine maximum flexibility, high performance, economic savings, respect for the environment and cutting-edge use technologies. In addition, Pesaresi Giuseppe Spa also makes available the Pavesmart 3D satellite control system together with the use of the Wirtgen W 210 Cold Milling Machine.

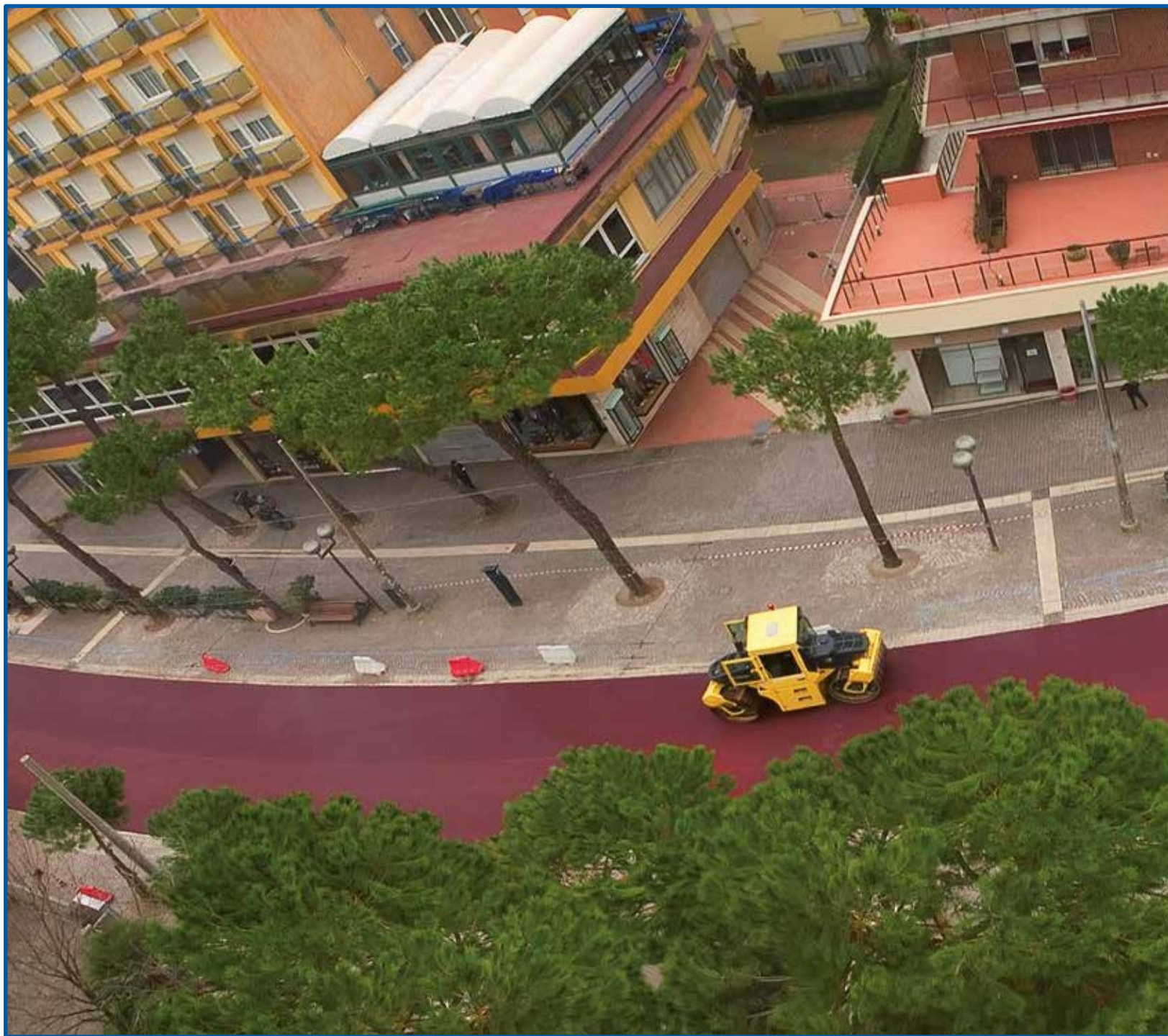
VEHICLE FLEET



VEHICLE FLEET

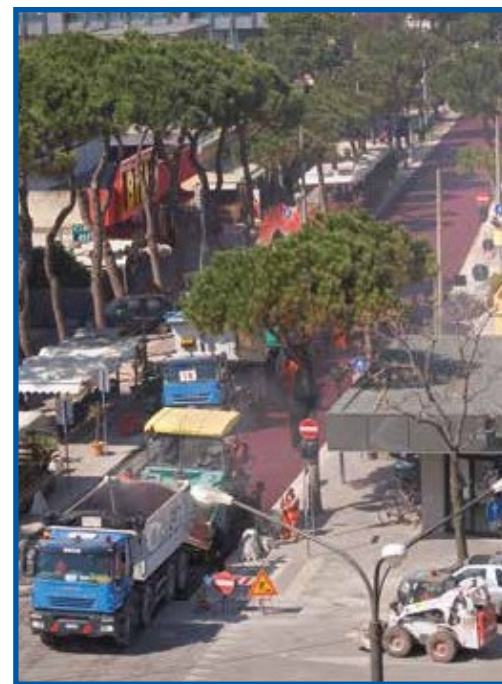
COLOURED ASPHALT



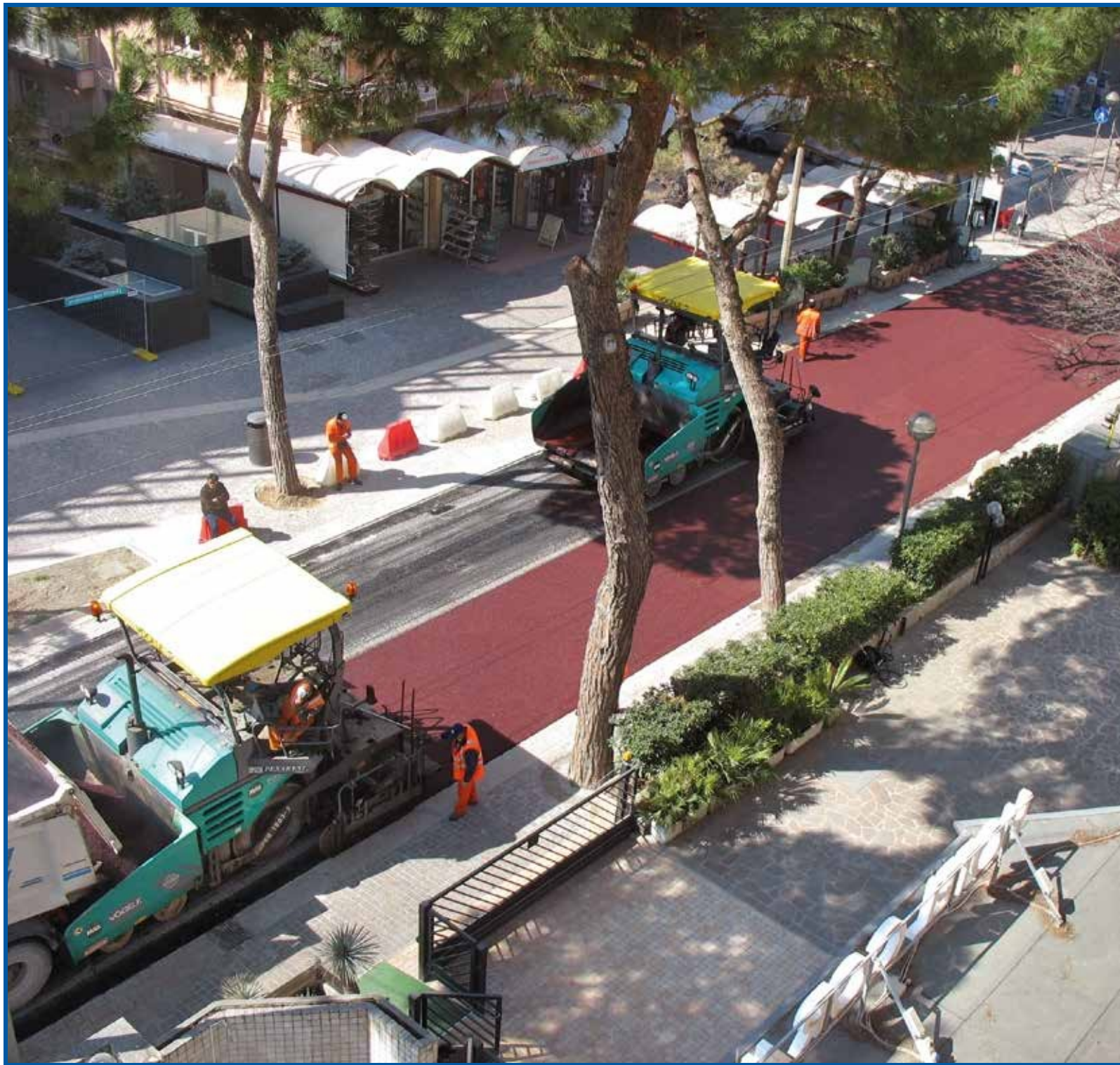


COLOURED ASPHALTS • *Viale A. Vespucci, Marina Centro, Rimini.*



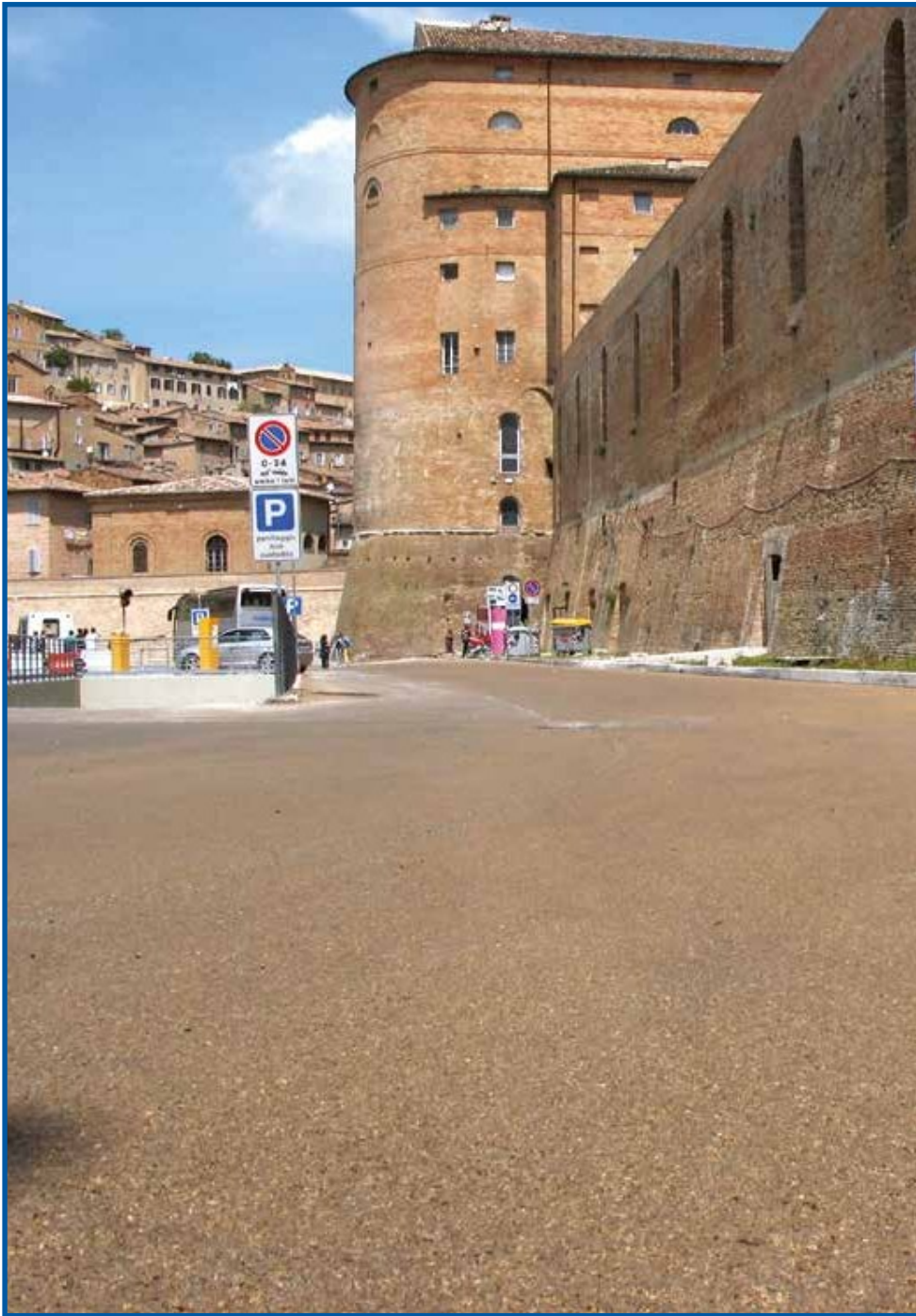


ASFALTI COLORATI • Viale A. Vespucci, Marina Centro, Rimini.

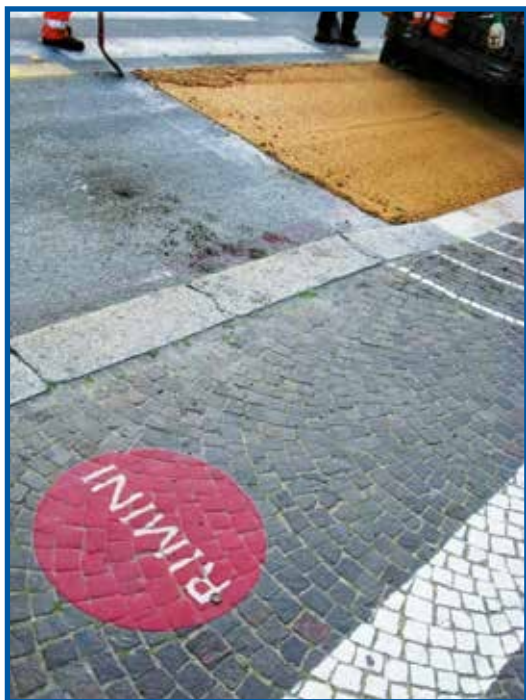




COLOURED ASPHALTS • *Via Alessandro Serpieri, Rimini, City centre.*



COLOURED ASPHALTS • Municipality of Urbino. Paving of the city centre and wall boundary.



COLOURED ASPHALTS • Rimini. Viale Tintori. Cycle path.



COLOURED ASPHALTS • Rimini. Viale Tintori. Cycle path.



Red



Green



Neutral



Blue



Yellow

The coloured asphalts have become part of public and private furnishings, for Pesaresi Giuseppe Spa they are the result of careful research on the application of this product. Asphalts are available in different colours including red, green, neutral, yellow and blue. The use of these asphalts has been applied by Pesaresi Giuseppe SpA to urban traffic roundabouts, private villas, schools, squares, historic urban sites. On each of these occasions, the intervention has strongly enhanced and re-evaluated the surrounding space, providing new and interesting opportunities to live and appreciate it.

COLOURED ASPHALTS

FAST TO ASPHALT





FAST ASPHALT

The cold plastic conglomerate also known as "Rapid Asphalt" is a ready-to-use bituminous conglomerate, intended for the rapid restoration of road surfaces damaged by potholes.

It is a versatile, easy-to-use material that does not need to be heated or stirred before use.

It is sold in bulk or packaged in practical plastic bags weighing 25 kilograms. The application does not require the intervention of qualified personnel, and takes place easily, simply laying the conglomerate and compacting it with normal construction tools. It is made with a mixture of grits and selected limestone sands, road bitumen and fluxing chemical additives, the dosage of which is calibrated according to the climatic and environmental conditions of use.

The mixture thus obtained is stable and maintains good workability requirements for an indicative period of 3-4 months.

All information on use and application can be found on the website www.pesaresi.com



RECOVER



RECOVER



RECOVER

Rubble, byproducts (not waste), represent one of the most important goals achieved by the research and development of the company quality, safety and environment of the Company Pesaresi Giuseppe S.p.a.

How to find us.

Rimini • Italy • Europe

Nearby airports:

- *Milan*
- *Bologna*
- *Florence*
- *Rimini*

PESARESI GIUSEPPE S.p.A.
Infrastrutture

Via Emilia, 190 • 47922 Rimini (RN) - Italia -Italy
tel. +39 0541 740356 • fax +39 0541 741545
pesaresi@pesaresi.com
www.pesaresi.com